



SMARTER WAYS TO WORK™



TITAN HT 330/400

Tier IV Final

**HydroSeeder®**

### More horsepower with high efficiency hydraulic system.

- 173HP Tier IV Final John Deere water cooled, turbo-diesel engine
- Self-diagnosing engine including low oil pressure and high temperature shut-off system
- Innovative control system, with multi-language capability, to control all machine functions
- Electronically controlled hydraulic system to enable maximum performance and productivity
- 6 x 3 inch, hydrostatically driven 530 gpm centrifugal pump standard and an optional 6 x 3 hydrostatically driven 465 gpm vortex pump
- Two (2) heavy duty, reversible and variable speed mechanical agitators with liquid recirculation
- Agitator speed and direction control is independent of engine speed for faster loading of materials

### More flexibility.

- Single boom, dual boom or hose application
- Mix and spray any material from the heaviest slurry BFM's, FGM's, plaster-based additives and lime
- Pump and agitator speed independent from engine speed
- 4000 or 3300 gallon tank capacity
- Increased deck space with integral tie down points for increased material storage – storage for up to 8 pallets on the HT400
- Optional stainless steel tank and agitators
- Optional air-flush system available

### More versatility and speed.

- High power agitators for grinding and mixing tough/heavy slurries
- Optimized agitator paddle layout for increased material circulation in the tank and reduced potential for air entrainment in the slurry
- Optimized 6 inch suction line for faster unloading – ideal for re-vegetation using aircraft or large area coverage
- Why Titan? Best performance, best productivity and ultimate convenience of any unit on the market.

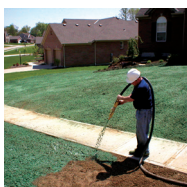
### Features and Benefits

- Spraying distances of over 300 feet from boom
- Dual boom as an option for spraying on both sides of the unit for hard-to reach areas
- Hydraulic hose reel with Reel-In and Reel-Out functionality
- Revolutionary integrated bale grinder for faster and more efficient loading
- Helical designed agitators improves material movement within the tank for more efficient mixing and circulation
- Revolutionary long-life, low maintenance agitator bearings
- Interchangeable centrifugal and vortex pump
- Centralized lubrication/service points for increased unit serviceability
- Larger gates and open-space design dramatically increases the amount of usable storage space on top of the tank
- Remote control seamlessly integrated into the unit control system to easily control the pump while working with the hose

### Applications



Erosion Control



Landscape



Post-Construction



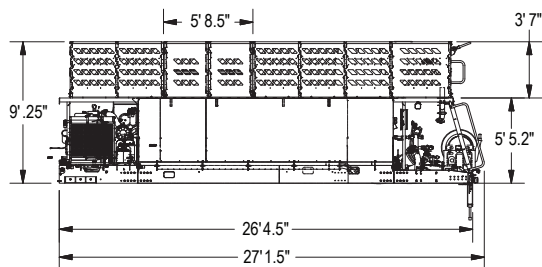
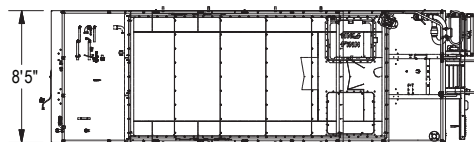
Highway / Oil / Gas / Pipeline



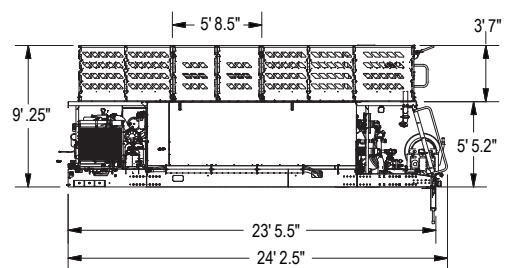
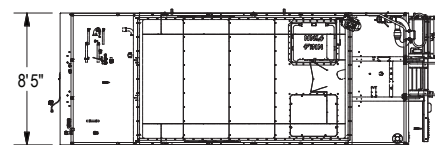
Fire Remediation

As the world leader for over 80 years in the design and manufacture of innovative, quality equipment for the green industry, and as the inventor of the HydroSeeder, FINN Corporation is committed to your complete satisfaction.

**HT400 HydroSeeder®**



**HT330 HydroSeeder®**



**Power**

John Deere 4045HFC09 Tier 4 Final Diesel, 173 HP (129kW), industrial water cooled diesel engine. Vibration Isolated. Control panel with digital information display, throttle, pump on/off, horn, agitator speed and direction controls and E-Stop. Additional engine start/stop switch and E-Stop button is located on the bumper.

**Engine Safety System**

Engine ECU with self-diagnostics, including low oil pressure and high temperature shutoff

**Tank Size**

**HT330:** 3350 Gallon (12,681 Liter) Liquid Capacity  
**HT330:** 3000 Gallon (11,356 Liter) Working Capacity  
**HT400:** 3975 Gallon (15,047 Liter) Liquid Capacity  
**HT400:** 3600 Gallon (13,627 Liter) Working Capacity

**Fuel Tank Capacity**

50 Gallon ( 189.3 Liter)

**Pump**

**Centrifugal:** 6" x 3" (15.2 cm x 7.6 cm), 530 gpm @ 200 psi, 1.25" solid clearance  
**Vortex:** 6" x 3" (15.2 cm x 7.6 cm), 465 gpm @ 150 psi, 3" solid clearance

**Pump Drive**

Hydrostatically driven

**Agitation**

Twin mechanical agitators with helical paddle orientation and liquid recirculation

**Agitator Drive System**

Reversible, variable speed hydraulically driven  
 Lower Agitator: 0-150 RPM  
 Upper Agitator: 0-175 RPM

**Discharge Distance**

Greater than 300 ft. (91.4m) from discharge tower

**Material Capacity**

**HT330:** Granular Solids: 10,000 lbs. (4535.9 kg)  
**HT330:** Fiber Mulch: 1,500 lbs. (680.4 kg)  
**HT400:** Granular Solids: 12,400 lbs. (5624.5 kg)  
**HT400:** Fiber Mulch: 1,800 lbs. (816.5 kg)

**Material Carrying Capacity**

**HT330:** 50 lbs. / sq. ft. (4,800 lbs.)  
 244.1 kg / sq. m (2177.2 kg)  
**HT400:** 50 lbs. / sq. ft. (6,400 lbs.)  
 244.1 kg / sq. m (2903 kg)

**Nozzles**

(2) Narrow Fan, (2) Wide Fan, (2) Long Distance

**Empty Weight**

**HT330:** 14,000 lbs. (6350.3 kg)\*  
**HT400:** 15,000 lbs. (6803.9 kg)\*

**Working Weight**

**HT330:** 40,550 lbs. (18393.2 kg)\*\*  
**HT400:** 46,860 lbs. (21255.3 kg)\*\*

**Loading Hatch**

Raised, sealed hatch with 24-1/2" x 29-1/2" opening and integrated, pivoted stainless steel bag cutter with safety grate

**Bale Grinder**

Agitator with integrated mulch bale grinder for faster material loading

**Optional Equipment**

Stainless Steel Tank and Lids, Stainless Steel Agitator, Hose Reel Package w/ 1-1/4" Hose, Hose Reel Package w/ 1-1/2" Hose, Second Boom, Air Flush, Hardened Pump, Additional Fill Port, Rear Spray Bar, Front Flushers, Cab Controls

Note: Weight and specs subject to change after testing.

\* Empty weight includes 50 gal. of fuel and all engine and hydraulic fluids

\*\* Working weight includes one full load of fiber mulch and water with no stored materials on deck.

FINN Corporation has a policy of continuous product improvement, and reserves the right to change design and specifications without notice.

HydroSeeder® and the FINN Design® Logo are registered trademarks of FINN Corporation.

