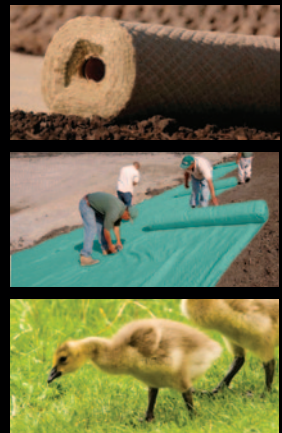




 **Futerra**<sup>®</sup>  
F4 NETLESS<sup>®</sup>

 **Futerra**<sup>®</sup>  
ENVIRONET<sup>™</sup>



ENVIRONMENTALLY FRIENDLY BLANKETS  
FOR GROWTH ESTABLISHMENT AND EROSION CONTROL

 **Profile**<sup>®</sup>  
Solutions for your Environment<sup>™</sup>

## COMPREHENSIVE, SUSTAINABLE SOLUTIONS FOR YOUR ENVIRONMENT

Profile® offers environmentally sound, site-specific solutions for your environment. These solutions include soil modification, erosion control and plant establishment. Many of today's industry standards were innovations developed and introduced by Profile, which incorporate Green Design Engineering™.



**GREEN DESIGN  
ENGINEERING™**

EARTH-FRIENDLY SOLUTIONS  
FOR SUSTAINABLE RESULTS™

This holistic approach combines environmentally beneficial project design with products that are ecologically responsible to help you maximize erosion control and vegetation establishment on slopes, channels, shorelines, fine turf areas and environmentally sensitive sites. The utilization of Green Design Engineering technologies assures you are contributing to today's most effective, cost-efficient and earth-friendly erosion control solutions for your environment.



**WHISKEY CREEK  
GOLF CLUB  
IJAMSVILLE, MD**

### MOST SPECIFIED BLANKET FOR THE GOLF INDUSTRY

Futerra® is the ideal choice for establishing thick turf and native areas on golf courses. Futerra is a flexible, environmentally friendly solution, allowing you to use an assortment of specified plant varieties across the course—without special equipment. Futerra is easy to install, providing immediate erosion control and rapid vegetation establishment, even on fine turf areas. And, it costs less than half the price of installed sod while creating a smoother, more aesthetically pleasing playing surface for golfers.

Profile Products proudly supports:



**Charter Affiliate**



**PROFILE—A MAJOR  
PARTNER IN EDUCATION**

## THE FUTERRA® FAMILY: PROVEN 99.9% EFFECTIVE

Profile Products brings you the Futerra® family of erosion control and revegetation blankets—to minimize soil erosion while rapidly establishing vegetation. Futerra blankets provide greater aesthetic appeal, are easier to install and provide an unparalleled 99.9% erosion control effectiveness and faster germination than traditional stitch-bonded straw, coconut and excelsior blankets that are plagued by dangerous and unsightly loose nettings and threads.

Through a proprietary and patented process, Futerra uses Thermally Refined® wood and degradable man-made fibers that are intertwined into a dimensionally stable composite matrix that conforms to the soil surface, preventing washouts and seed migration. This innovative technology allows Futerra to rapidly absorb water and hold it in place for enhanced germination and growth.

### FUTERRA® F4 NETLESS®

Futerra F4 Netless employs a lightweight, yet lofty matrix that provides high levels of slope protection and vegetative establishment for fine turf and environmentally sensitive applications.

With weed-free and environmentally friendly F4 Netless, there are no nets or threads to entangle plants and animals or snare maintenance equipment.

Photo courtesy of Lucinda Dustin



Minimize  
Environmental Risks



Eliminate Unsightly  
Nets or Threads



Reduce Maintenance  
Issues and Downtime

### FUTERRA® ENVIRONET™

Building on the superior erosion control and turf establishment qualities of F4 Netless, Profile created EnviroNet for slopes and environmentally sensitive sites where windy conditions and/or higher levels of installation stress may be encountered.

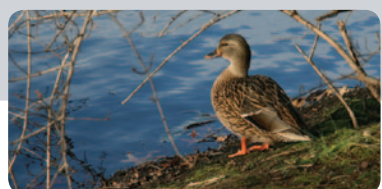
EnviroNet features a thermally fused matrix, reinforced with a quick degrading, rectangular netting that minimizes wildlife entanglement and improves site safety.



Unique Strand Configuration  
Maximizes Degradation



Shown Above – Traditional Nets  
Can Trap Wildlife



Designed to Protect  
Environmentally Sensitive Sites



## DESIGNED FOR THE ENVIRONMENT

Fully photo and biodegradable, minimizing wildlife hazards and eliminating clean up after the job.

## ACCELERATED GERMINATION

Faster seed germination compared to alternative products.

## CONFORMS TO SOIL

Prevents rilling and seed migration.

## LIGHTWEIGHT DESIGN

Half the weight of excelsior blankets, allowing for faster installation.

Packaging information and instructions for Futerra® F4 Netless® and Futerra® EnviroNet™ can be found behind the products samples to the right.

### FUTERRA® F4 NETLESS®

Roll Dimensions	Roll Area	Average Weight	Rolls/Pallet	Truckload Quantity
3.25' x 90' 1 m x 27.4 m	32.5 yd <sup>2</sup> 27.4 m <sup>2</sup>	10.5 lb 4.8 kg	32	24,960 yd <sup>2</sup> 20,866 m <sup>2</sup>
6.50' x 90' 2 m x 27.4 m	65 yd <sup>2</sup> 54.8 m <sup>2</sup>	20.5 lb 9.32 kg	16	24,960 yd <sup>2</sup> 20,866 m <sup>2</sup>

*Rolls available in green or natural color. Wrapped individually in UV-resistant plastic film with printed installation guidelines.*

*Pallets packaged in weather-resistant stretch wrap for outdoor storage.*

**For product specifications and additional technical or installation instructions, please visit [www.futerra.com](http://www.futerra.com).**

### FUTERRA® ENVIRONET™

Roll Dimensions	Roll Area	Average Weight	Rolls/Pallet	Truckload Quantity
3.33' x 135' 1 m x 41 m	50 yd <sup>2</sup> 41 m <sup>2</sup>	17 lb 7.7 kg	32	38,400 yd <sup>2</sup> 31,488 m <sup>2</sup>
6.83' x 135' 2.1 m x 41 m	102.5 yd <sup>2</sup> 86.1 m <sup>2</sup>	36 lb 16.3 kg	16	39,360 yd <sup>2</sup> 33,062 m <sup>2</sup>

## BLANKETS DESIGNED TO OUTPERFORM— EVEN ON ENVIRONMENTALLY SENSITIVE SITES



### PROTECTS THE EARTH

Futerra® blankets are proven to keep soil in place with 99.9% effectiveness. When compared to traditional blankets and nets, Futerra clearly provides better slope protection with faster, thicker vegetative establishment.

### EASIER TO INSTALL

Futerra® F4 Netless® and EnviroNet™ are lighter and easier to cut, shape and deploy than other blankets. They require fewer man-hours and offer quick coverage for even the toughest landscape challenges.

### ENHANCED SITE SAFETY

Both F4 Netless and new EnviroNet are designed to minimize danger to wildlife or maintenance equipment. No nets mean no entanglement and in those areas where netting is needed, the rapidly degrading, open aperture of the EnviroNet netting provides a reliable and safe alternative.

### EASILY REPLACES SOD

Futerra is routinely installed on golf courses, parks, commercial projects and home building sites in lieu of sod for the following reasons:

- Saves valuable dollars—costs less than half the price of installed sod, including seed and fertilizer
- Saves installation time—it takes one man-hour to lay 3,000 square feet of Futerra versus one man-hour to lay 500 square feet of sod
- Improves site logistics—one truckload of Futerra EnviroNet covers eight acres, compared to a truckload of sod that only covers one-quarter of an acre
- Flexible—allows recently released seed varieties to be used versus sod monoculture

### NATURE-FRIENDLY ANCHORS

Reinforcing Profile's Green Design Engineering™ initiative, a complete line of Futerra stakes and staples are available. Biodegradable Futerra Stakes™ are a safer, more environmentally friendly alternative for securing blankets. Futerra Staple Guns™ and Futerra Staples™ improve installation efficiencies while reducing labor time and costs.

# PROOF FUTERRA® OUTPERFORMS THE COMPETITION

## WE KEEP THE EARTH FROM MOVING

Comparative data from the demanding testing protocol developed at the Utah Water Research Laboratory (UWRL) demonstrates that Futerra® F4 Netless® and EnviroNet™ took erosion control effectiveness ratings to unprecedented levels. Percent effectiveness compares erosion amounts of a slope treated with an erosion control device versus the same unprotected slope when subjected to carefully controlled rainfall events. Slope gradient, length, soil type, rainfall intensity, raindrop kinetic energy and event duration are the most commonly evaluated parameters when comparing erosion control devices. Percent effectiveness is determined by subtracting the soil loss ratio of the treated surface versus an untreated control surface ("C" Factor) from one and multiplying by 100 percent.

Soil Loss/Acre\*



\* Soil loss/acre calculation based upon extrapolation of soil loss to a one acre site disturbance

## NEARLY PERFECT PERFORMANCE

Futerra blankets have been proven to deliver the fastest germination and highest effectiveness rating when compared to traditional straw and excelsior blankets. They have been evaluated under the standard growth establishment testing protocol developed and endorsed by the American Society for Testing and Materials (ASTM) the technical and marketing trade association for rolled erosion control products. Comparative growth establishment data derived from standard test methods ASTM D1117–Water Absorption and ASTM D7322–Growth Establishment, verified clear agronomic superiority of Futerra F4 Netless and EnviroNet over stitch-bonded straw and excelsior blankets.

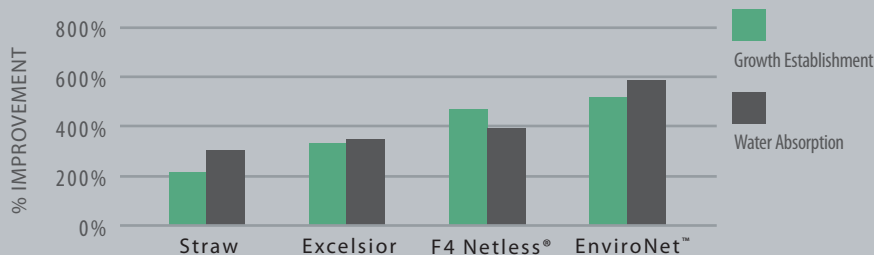
## FUTERRA PROVEN 99.9% EFFECTIVE

	C-Factor <sup>1</sup>	Effectiveness Rating	Soil Loss/Plot <sup>2</sup>
Futerra® EnviroNet™	0.0007	99.9+%	0.2 lb
Futerra® F4 Netless®	0.001	99.9%	0.4 lb
Single-Net Straw Blanket	0.073	92.7%	28.9 lb
Single-Net Excelsior Blanket	0.075	92.5%	29.8 lb
Bare Soil Control	1.000	0.0%	397.0 lb

<sup>1</sup> Test Conditions — UWRL Rainfall Simulator, Slope Gradient — 2.5H:1V

Soil Type — Sandy Loam; Rainfall Event — 5"/hr; Test Duration — 1 hr; <sup>2</sup>Plot size 4' by 19.5'

## ABSORBS MORE WATER, SPEEDS GERMINATION



Average values of industry leading single-net straw and excelsior blankets as detailed in public AASHTO-NTPEP reports and independent laboratory testing using standard test methods ASTM D1117 and D7322



For technical information, distributor location and customer service call (800) 508-8681.

©2011 PROFILE Products LLC, all rights reserved.

Profile, Futerra F4 Netless, Thermally Refined and Futerra are registered trademarks of PROFILE Products LLC.

EnviroNet, Green Design Engineering, Solutions For Your Environment, Futerra Stakes, Futerra Staple Guns

and Futerra Staples are trademarks of PROFILE Products LLC.

750 Lake Cook Road • Suite 440 • Buffalo Grove, IL 60089

[www.futerra.com](http://www.futerra.com)



**GREEN DESIGN  
ENGINEERING™**  
EARTH-FRIENDLY SOLUTIONS  
FOR SUSTAINABLE RESULTS™

